

HXL SPECIFICATIONS		H-28A		H-32A		H-40/40		H-40/60		H-40/80		H26/42	
CAPACITY	Rectangular Round	28" x 28" 28"	711 x 711mm 711mm	32" x 32" 32"	813 x 813mm 813mm	40" x 40" 40"	1016 x 1016 mm 1016mm	40" x 60" 40"	1016 x 1524 mm 1016mm	40" x 80" 40"	1016 x 2032 mm 1016mm	26" x 42" 30" (40" Beam)	660 x 1067mm 762mm
	With Canted Head	24" h x 28" w	610 x 711mm	28" h x 32" w	711 x 813mm	n/a	n/a	n/a	n/a	n/a	n/a	n/a	n/a
BLADE	Blade Dimensions	25' 2"	7620mm 51mm	30' 4" 2 1/4"	9246mm 67mm	37' 3"	11278mm 76mm	40' 4" 3"	12294mm 76mm	43' 10" 3"	13360mm 76mm	33' 2 3/4"	10058mm 67mm
	Blade Drive	10 hp	7.46 kW	20 hp	15 kW	20 hp	15kW	20 hp	15kW	20 hp	15kW	20 hp	15kW
	Blade Speed	40-300 SFM	12-91 m/min	40-300 SFM	12-91 m/min	45-225 SFM	14-70 m/min	45-225 SFM	14-70 m/min	45-225 SFM	14-70 m/min	75-300 SFM	23-91 m/min
OVERALL	Shuttle Stroke	32"	813mm	32"	813mm	n/a	n/a	n/a	n/a	n/a	n/a	n/a	n/a
	Hydraulic Drive	5 hp	3.75 kW	5 hp	3.75 kW	5 hp	3.75 kW	5 hp	3.75 kW	5 hp	3.75 kW	3 hp	2.2 kW
	Coolant Tank Capacity	40 US Gal	150 litres	40 US Gal	150 litres	27 US Gal	64 litres	27 US Gal	64 litres	27 US Gal	64 litres	30 US Gal	114 litres
	Table Height (with canted head)	31" 37"	787mm 940mm	31" 37"	787mm 940mm	27" n/a	686mm n/a	27" n/a	686mm n/a	27" n/a	686mm n/a	38" n/a	965mm n/a
	Automatic Machine Weight	18000 lbs	8165 kg	28000 lbs	12701 kg	39000 lbs	17690 kg	42000 lbs	19051 kg	52000 lbs	23587 kg	21000 lbs	9525 kg
	Machine Dimensions	Width Length Height	161" 92" 120"	4089mm 2337mm 3048mm	182" 92" 120"	4623mm 2337mm 3048mm	215" 102" 145"	5461mm 2591mm 3683mm	235" 102" 145"	5969mm 2591mm 3683mm	255" 102" 145"	6477mm 2591mm 3683mm	217" 82" 137"

In line with HYD-MECH's policy of on-going product improvement, we reserve the right to modify features and specifications. Note that some options may not be available or are standard on the CE machines. Please check with your dealer for option availability.

Complete Beam Line with Material Handling Cross Conveyors Available



Our **Rock Solid Pledge** promises you the best cost-per-cut solution, the latest in design and engineering technologies, only high quality components and excellent customer service for your Hyd-Mech sawing system.



HYD-MECH GROUP LIMITED

P.O. Box 1659 1079 Parkinson Road, Woodstock, Ontario, Canada N4S 0A9
toll free: 1-877-276-SAWS(7297) phone: (519) 537-2103 fax: (519) 539-5126

www.hydmech.com email: info@hydmech.com

DEALER:

H-28A

Note:
Photos may
show optional
equipment.

STANDARD FEATURES:

- 10 HP variable frequency drive motor
- 2" blade
- 32" single stroke, multi-index capability shuttle
- Carbide guides
- Hydraulic driven blade brush
- Hydraulic blade tensioning
- PLC control
- Chip auger
- Flood coolant
- Wash down hose

Both H-28P & H-32P semi-automatic models available



OPTIONS:

- Out of stock switch
- Full capacity overhead bundling
- Laser beam light
- 6° canted head
- Vertical rollers
- Variable vise pressure
- Mist coolant system

MATERIAL HANDLING:

- Idler roller conveyors
- Powered roller conveyors

H-32A

STANDARD FEATURES:

- 20 HP variable frequency drive motor
- 2 3/8" blade
- 32" single stroke, multi-index capability shuttle
- Carbide guides
- Hydraulic driven blade brush
- Hydraulic blade tensioning
- PLC control
- Chip auger
- Flood coolant
- Wash down hose

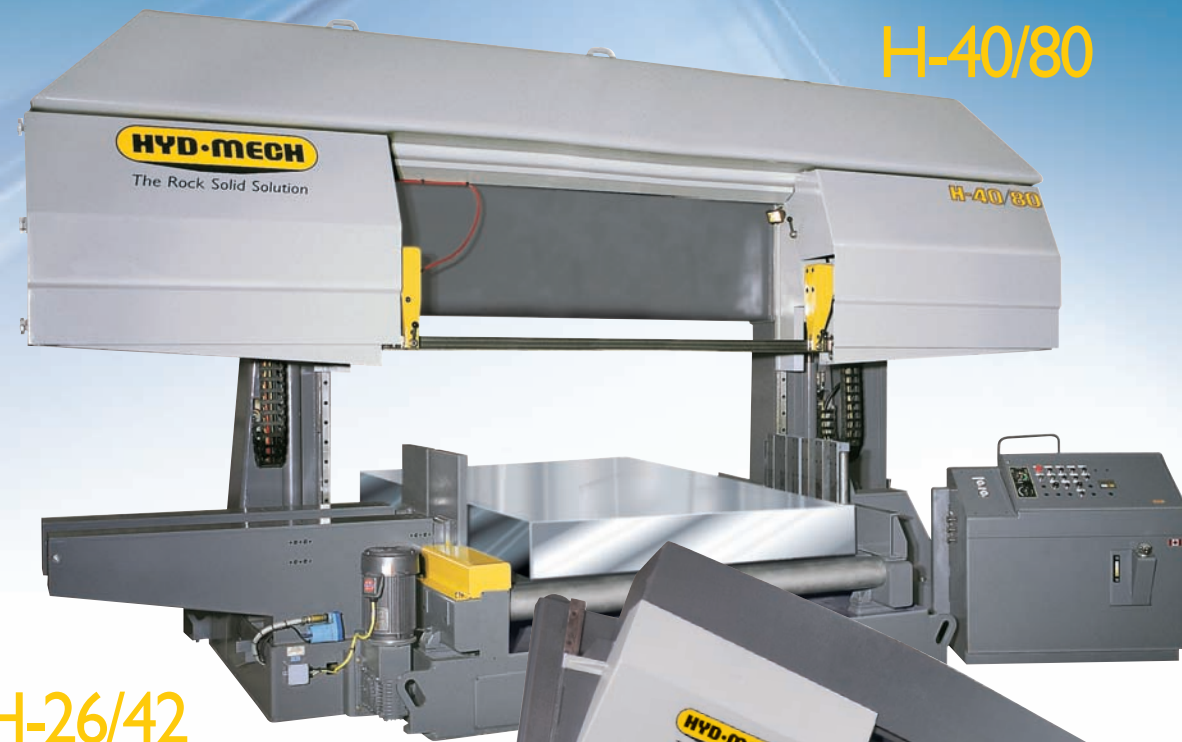


Extra Large Capacity

26" to 80" Capacity 660 to 2030 mm

Dual Post Horizontal Band Saws

H-40/40
H-40/60
H-40/80



H-26/42

STANDARD FEATURES:

- 20 HP VFD Blade Drive
- Descent Meter
- 3 HP Hydraulic Drive
- 2 5/8" Blade
- 12° Canted Head
- Hydraulic Guide Arm Positioning
- Carbide Guide Inserts
- 4" Hydraulic Driven Blade Brush
- Hydraulic Blade Tensioning
- Blade Breakage Switch
- Chip Auger
- Flood Coolant
- Wash Down Hose

OPTIONS:

- Hydraulic Overhead Clamp
- Laser Beam Light
- Outboard Vise
- Mist coolant system



Note: Photos may show optional equipment.

STANDARD FEATURES:

- 20 HP motor
- 3" blade
- Power rollers
- Carbide guides
- Hydraulic driven blade brush
- Hydraulic blade tensioning
- Up to 80" capacity
- Flood coolant
- Wash down hose

OPTIONS:

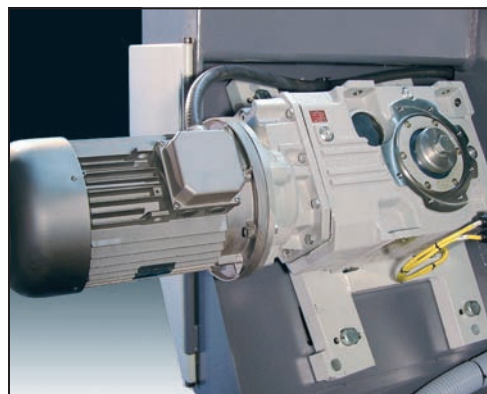
- Outboard vise
- Laser beam light
- Variable vise pressure
- Mist coolant system

MATERIAL HANDLING:

- 5' or 10' Powered Conveyors

Heavy Duty Gear Box

Motor connected directly to the Gear Box controlled by an AC Inverter Drive providing a large range of band speeds. Feed Rate and Band Speed are digitally displayed on operator interface.



Robust Guide Arms

Heavy duty hydraulically powered guide arm adjust to clamp width providing optimum beam strength. Equipped with carbide guide inserts. Optional Laser Light assists operator in positioning material for the cut.



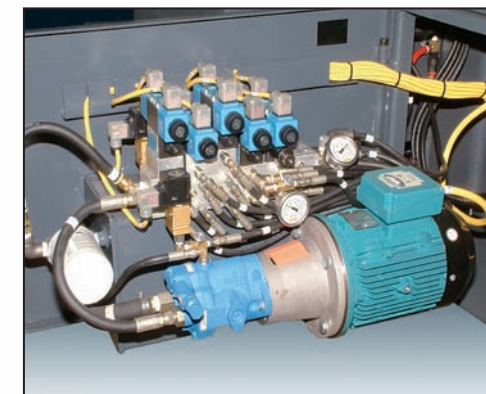
Chip Auger

Hydraulically driven Chip Auger ensures efficient chip removal.



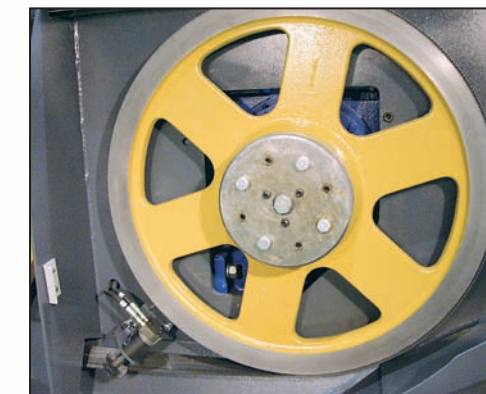
Hydraulic System

Hydraulic system controls all vising, head up/down, blade tension, guide arm and shuttle. Conveniently located in a "swing out" compartment for easy access and enhanced serviceability.



Large Band Wheels

Constructed from heavy cast iron, the Band Wheels are canted creating less blade twist resulting in longer blade life.



Powered Rollers

8' variable frequency drive controlled power rollers through the base of the saw (40/40, 40/60, & 40/80 only).

